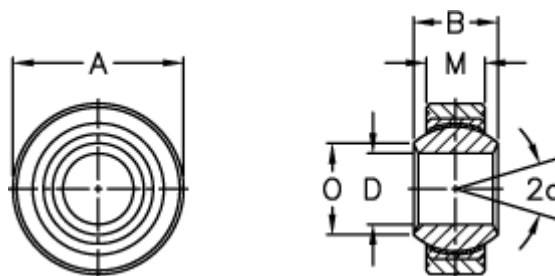


Article number: 03403006

Description: Fluro Rod end GLXSW 6

Measures



A	= 18	Static load C0 (kN) = 15.5
a (degrees)	= 13	Weight = 12
B	= 9	
D	= 6	
Dynamic load C (kN)	= 9.3	
M	= 6.75	
O	= 8.9	
Permissible rpm	= 530	